



The TRAM rail has been installed to the existing structure

A Rotating Arm TRAM (RAT) has been selected in this application. The rotating mechanism is designed to allow the user access to a work area of greater radius whilst remaining anchored to the TRAM system.



The operator wears a restraint belt

And accesses the gantry via the stairs



The operator moves on to the top of the tank via a drop down walkway.

The operator is attached to an anchor point on the gantry whilst he attaches to the TRAM.



The operator now has both lanyards attached to the TRAM



The operator rotates the TRAM arm in to the normal travel position

To rotate the arm, the rotation lever is depressed with one hand whilst rotating the arm with the other hand.

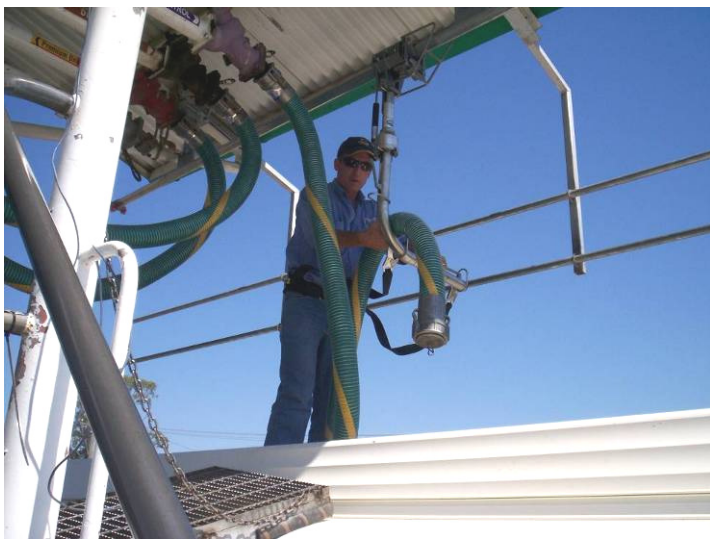


The operator can walk along the length of the tank

To move the TRAM along the rail, the brake lever is depressed and held whilst the TRAM is pushed or pulled along.



The operator lifts the hoses over to the tank



The TRAM arm can be used to help move the hoses



The operator attaches the hose and fills the tank